

GE Healthcare

Hand in hand for a healthier world

LOGIQ V1



Portable, practical, and ready for your diagnostic challenges

You use every tool possible to help your patients achieve healthier lives. Now you can add the advanced capabilities of the compact LOGIQ™ V1 ultrasound system to patient care.



Take your imaging capabilities to the next level

The compact LOGIQ V1 includes many advanced imaging technologies from decades of GE experience, including:

- **Coded Harmonic Imaging** enables high resolution even at deep penetration.
- **Real Time Speckle Reduction Imaging (SRI-HD)** reduces noise while enhancing true tissue detail.
- **CrossXBeam™** enhances your ability to visualize tissue interfaces and differentiate borders.

A system as versatile as your practice

The versatile LOGIQ V1 system accommodates a wide range of exams, including abdominal, obstetrics and gynecology, small parts, vascular, cardiac, pediatric and transcranial.

Push just a few buttons, enhance exam efficiency

With the LOGIQ V1, you get fast, accurate information with few keystrokes. For example:

- **SonoBiometry** – Performs key fetal biometry measurements in seconds.
- **Auto IMT** – Automates measurement of intima-media thickness for fast carotid exams.
- **Scan Assistant** – Puts imaging protocols at your fingertips to reduce keystrokes by as much as 22 percent¹.
- **Auto Optimization** - Optimizes B-Mode image to help improve contrast resolution.

Scanning support — real time, real easy

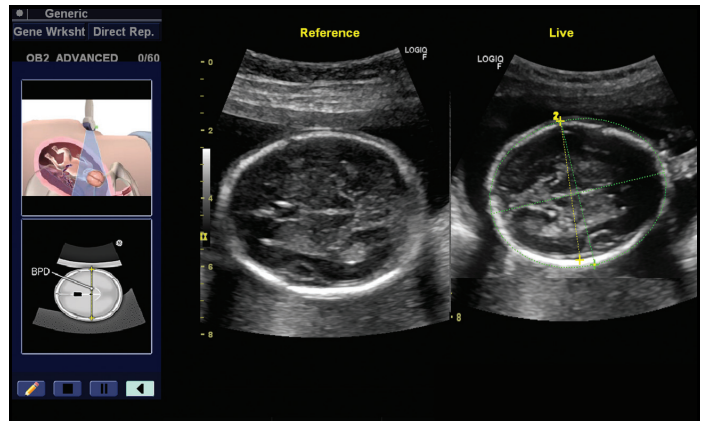
The LOGIQ V1 gives you access to real-time guidance to support exam efficiency and accuracy:

- **Scan Coach** – Innovative scan plane reference tool that displays reference images, animations, and schematics during live scanning.
- **Onboard help** – Interactive access to information on settings, operation, connectivity, and maintenance, plus a link to the user manual for more details.

Plus, you become a member of the LOGIQ Club, with online access to tools and resources to help you experience the full power of your LOGIQ ultrasound system.

Reliability that drives productivity

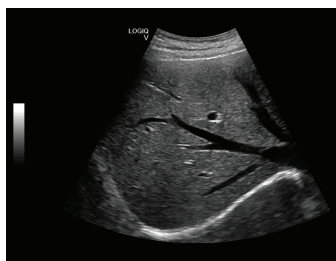
With thousands of LOGIQ systems installed worldwide, the robust LOGIQ V1 is backed by strong GE service and support, and a multi-year warranty offering that includes probes, parts, and labor.



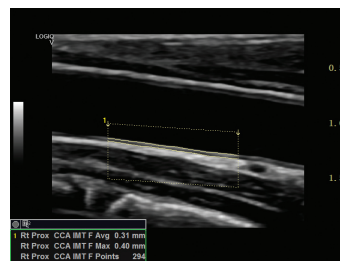
Scan Coach



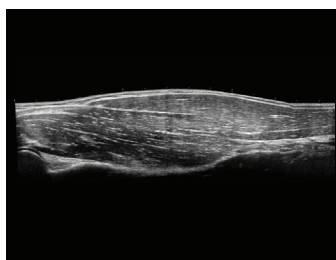
Onboard help



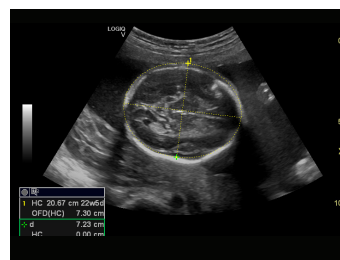
Liver



Auto IMT



LOGIQ View



SonoBiometry

With its compact design – yet large LCD display – and standard battery back-up, the LOGIQ V1 fits into small spaces and easily maneuvers where you need it.





About GE Healthcare

GE Healthcare provides transformational medical technologies and services to meet the demand for increased access, enhanced quality and more affordable healthcare around the world. GE (NYSE: GE) works on things that matter - great people and technologies taking on tough challenges. From medical imaging, software & IT, patient monitoring and diagnostics to drug discovery, biopharmaceutical manufacturing technologies and performance improvement solutions, GE Healthcare helps medical professionals deliver great healthcare to their patients.

GE Healthcare
9900 innovation Drive
Wauwatosa, WI 53226
U.S.A.

www.gehealthcare.com

Imagination at work

Data subject to change

© 2015 General Electric Company. September 2015/JB34056XXa

GE, the GE Monogram, imagination at work, LOGIQ and CrossXBeam are trademarks of General Electric Company.

¹Based on internal study done with third-party consultants on LOGIQ E9, and software V&V documents.

Reproduction in any form is forbidden without prior written permission from GE. Nothing in this material should be used to diagnose or treat any disease or condition. Readers must consult a healthcare professional.