



# Hand in hand for a healthier world

## LOGIQ V5 Expert



# Versatility and diagnostic confidence go hand in hand

Versatile ultrasound capabilities are vital for shared services users. The LOGIQ™ V5 Expert system now supports a wide range of applications, including abdominal, vascular, obstetrics, pediatrics and other exams.

## Work with ease

Users with different experience levels will find LOGIQ V5 Expert simple and easy to operate:

**On-board reference tools** – Available on-demand during live scanning

- Scan Assistant – Automated exam protocols guide you through examinations, step by step, and help produce structured uniform reports
- Scan Coach – Provides clinical reference images and animation for additional information

**Auto IMT** – Provides automatic edge detection for intima-media thickness and auto-completes required measurements

**Easy 3D imaging** – Helps visualize volumetric data sets by a gradual sweep through region of interest

**Customizable settings** – Enable measurement presets and image adjustment presets localized to the imaging conventions in each geographic region

## Image with confidence

**Auto Optimization** – Automatically adjusts parameters and image quality factors with tools for tissue (ATO) and spectral (ASO) optimization

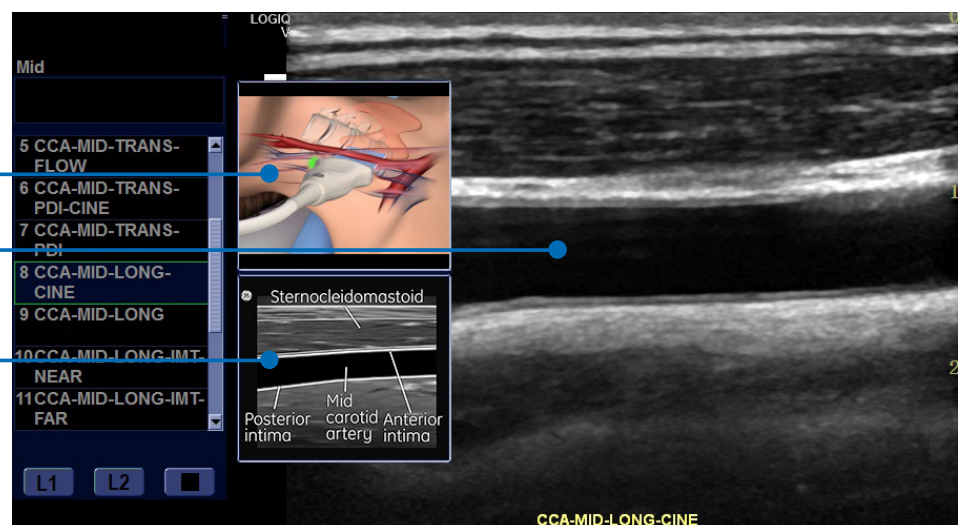
**Needle Recognition** – Harnessing pattern recognition technology, the system provides precise display of the needle, anatomy and motion, even in Color and Power Doppler

**ECG module** – Enables ECG mapping to be visualized alongside corresponding ultrasound image\*

ANIMATION

REFERENCE IMAGE

SCHEMATIC DRAWING



Scan Coach





## One system, many uses

**Wide range of probes** – Tailored for your clinical needs and preferences

**Wireless connectivity** – Connects easily to wireless devices including PACS and teleradiology units

**Multiple probe ports** – Connect multiple probes at the same time, reducing the need for manual probe switching

**I/O (input/output) ports included** – Enables connectivity to a wide range of display devices without compromising image quality

## Count on GE reliability

**3-year warranty** – Comprehensive service coverage included in package with low total ownership cost\*

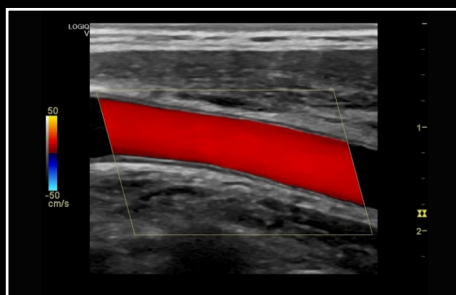
**Wide service coverage** – GE qualified service providers provide standard service across globe, from urban centers to rural areas\*

**Responsiveness** – Easy to maintain design for fast failure diagnosis and quick repairing, getting you back to scanning quickly

**My Trainer** – On-board training modules help accelerate user operational confidence



B-Mode



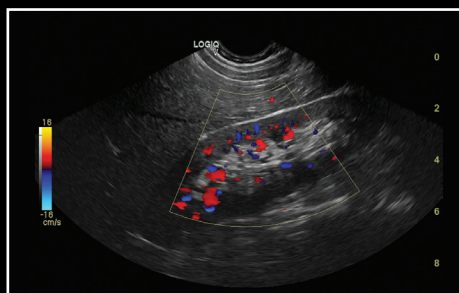
Color Flow - Carotid



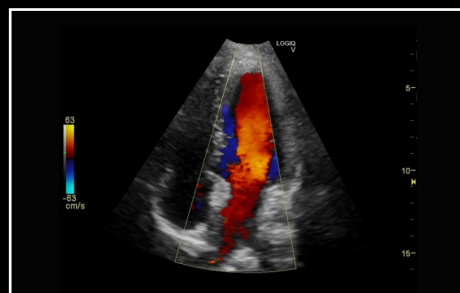
Pediatric Heart



Thyroid Nodule



Pediatric Renal



Adult Cardiac – Four Chamber View



## Imagination at work

Product may not be available in all countries and regions. Full product technical specification is available upon request. Contact a GE Healthcare Representative for more information. Please visit

[www.gehealthcare.com/promotional-locations](http://www.gehealthcare.com/promotional-locations).

Data subject to change

© 2016 General Electric Company. May 2016/JB40899XXa

\*Check for availability in your region

GE, the GE Monogram, imagination at work and LOGIQ are trademarks of General Electric Company.

Reproduction in any form is forbidden without prior written permission from GE. Nothing in this material should be used to diagnose or treat any disease or condition. Readers must consult a healthcare professional.