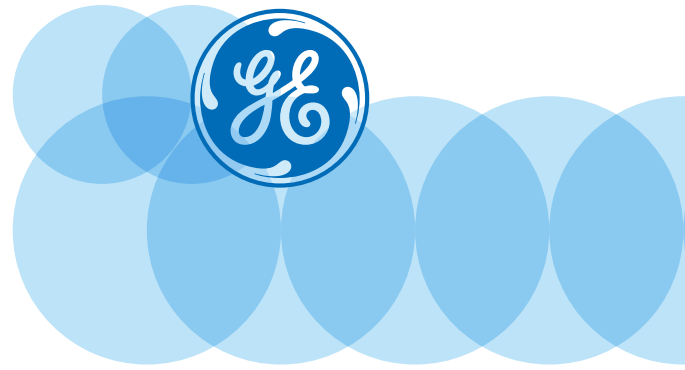


Vivid T8 Ultrasound



Cardiac and shared services. Together like never before from GE.

The Vivid™ T8 combines the established cardiac imaging capabilities of GE Vivid systems with exceptional shared services performance of the LOGIQ™ systems. The result is a truly hybrid cardiovascular ultrasound system that's rugged, reliable, robust, and rich with features, yet still affordable and convenient to use. And, with three years of comprehensive service coverage, the Vivid T8 system is designed to help enhance the total value of ownership.

Take rugged reliability to challenging conditions.

Reliability was the number one priority in developing the Vivid T8. The system was designed and rigorously tested to provide a hardy robustness and reliability even in very harsh, demanding environments.

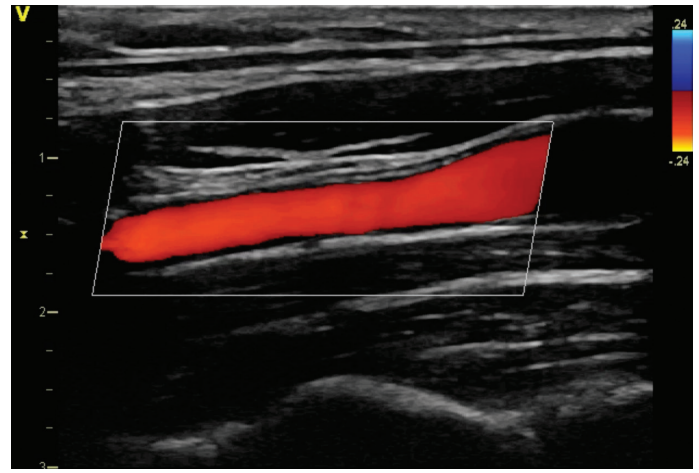
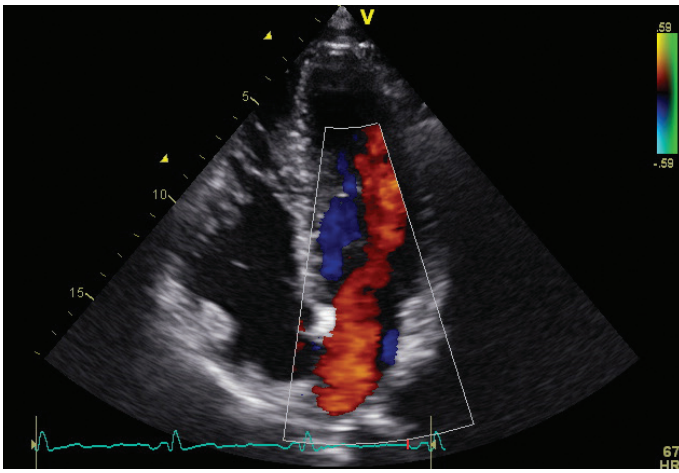
- **Rugged construction for durable performance** proven through 20 hours of intense vibration testing and shock testing with 1,000 strikes at a force of 10 Gs.
- **Broad thermal range** verified via rigorous thermal testing in both intense heat and cold and cycling back and forth between two temperature extremes.
- **Excellent dust protection** with superb performance even with both fans clogged with large amounts of dust.
- **Very low use error** even after repeated normal power-on/off cycles, forced power-off cycles, and transducer removals and insertions.

Scan with convenience.

The Vivid T8 is designed to be easy to operate and transport in many environments. Its intuitive user interface is a true Vivid console, with Vivid applications, features, workflow, and reliability, simplified for ease of use.

- **Intuitive control layout** includes the touch screen, rotary dials, patient management buttons and all Mode buttons conveniently grouped together near the trackball.
- **Scan Coach**—Showing basic scanning techniques with graphic of probe position, schematic of anatomy and example clinical image.
- **Ready-to-go mobility**—Thanks to the light, 58-kilogram (128 pounds) weight, durable casters, and push handles front and back—makes the Vivid T8 easy to push and roll on tiled or carpeted floors.
- **Smart Standby**—In case of accidental shutdown or power failure, or just when you are moving the scanner to another room, the system automatically saves data and the system turns into "Standby" mode. When power is restored, the system automatically turns on instantly, maintaining exact system state prior to shutdown.
- **Ample transducer capacity** provides four RS transducer ports and four standard transducer holders, plus two optional ones.





Leverage Vivid cardiac IQ and functionality.

A feature-rich system with established Vivid software, the T8 boosts its cardiac imaging capabilities with advanced quantitative tools.

- **Tissue Velocity Imaging** captures dynamic information from moving heart tissue to quantify left ventricular function.
- **AutoEF*** automatically assesses left ventricular ejection fraction using an automated, speckle-tracking ROI tool.
- **SmartStress*** automatically adjusts settings to help enhance workflow, reproducibility, and diagnostic confidence.
- **Automated Function Imaging*** assesses and quantifies left ventricular wall motion at rest, and calculates parameters to describe left ventricular wall function.
- **Tissue Tracking/Tissue Synchronization Imaging*** enhances images for assessing delayed cardiac wall motion.
- **Strain/Strain Rate Imaging*** helps enhance visual and quantitative recognition of dysfunctioning myocardial segments to help in evaluating regional systolic function in ischemic heart disease.
- **Complete cardiac transducer selection*** includes 3Sc-RS, 6S-RS, 6Tc-RS, 12S-RS and pedoff transducers.

Share services freely.

The flexible Vivid T8 delivers exceptional shared service image quality, with options to customize the system to your facility's needs.

- **Auto IMT*** provides automatic edge detection for intima-media thickness and auto-completes required measurements.
- **Virtual Convex*** extends the field of view when using linear transducers.
- **LOGIQview*** increases the field of view to image large organs that typically can't be seen in a single image.
- **B-Flow*** provides advanced spatial and temporal resolution to help assess blood flow and vessel wall structure without the limitations of Doppler.
- **Blood Flow Imaging*** helps enhance visualization of blood flow dynamics using a unique signal-processing algorithm.
- **Versatile shared service transducer selection*** includes 4C-RS, 8C-RS, E8C-RS, 9L-RS, L6-12-RS and 12L-RS transducers.

About GE Healthcare

GE Healthcare provides transformational medical technologies and services to meet the demand for increased access, enhanced quality and more affordable healthcare around the world. GE (NYSE: GE) works on things that matter - great people and technologies taking on tough challenges. From medical imaging, software & IT, patient monitoring and diagnostics to drug discovery, biopharmaceutical manufacturing technologies and performance improvement solutions, GE Healthcare helps medical professionals deliver great healthcare to their patients.

GE Healthcare
9900 Innovation Drive
Wauwatosa, WI 53226
U.S.A.

www.gehealthcare.com

©2016 General Electric Company

* Option

GE, GE monogram, LOGIQ, and Vivid are trademarks of General Electric Company or one of its subsidiaries.

GE Healthcare, a division of General Electric Company.

ULTC-0275-06.14-EN-US
JB21161XX(1)

